

2005-024

BATEMANS BAY BUSHWALKERS INC.

WALK PROPOSAL FORM

Please complete this form with as much detail as possible and pass it to Walks Organiser or Assistant Walks Organiser by the due date shown in the programme. (Please use black pen or biro to complete this form)

Walks Organiser; Karen MacLatchy 117 Wamban Rd. Moruya. Tel: 4474 3857

Assistant; Len Tompkins, 10 Batehaven Rd., Batehaven. Tel: 4472 9836

PREVIOUS WALK No NEW

PROPOSED DATE/S Saturday 23 April 2005 WALK No 05-24-M-15

DATE ALLOCATED (Walks organiser's use only) ~~Saturday 23 April 2005~~ Thursday 28 April, 2005

LOCATION &/OR ROUTE Francis Hill & Comans Mines

REFERENCE MAP/S CMA Moruya & Nerrigundah AGD66 (eg CMA Kioloa)

Grid Reference (start) 344/180(M) (finish) 606/004(N) Car travel involved Yes No BB 170 M 120 kms

WALK LEADER/S Roxy Platt Telephone: 4474 5359

WALK GRADING:

- EASY / SLOW () Good tracks relatively flat terrain, up to 5 - 6 kms, slow pace.
- EASY () Good tracks relatively flat terrain.
- EASY/MEDIUM () Good tracks, some hills or more difficult sections
- MEDIUM () Rougher tracks, fairly steep hills, up to 12kms.
- MEDIUM/HARD () Rough tracks, steep hills possibly rock scrambling & creek crossings, 12 + kms
- HARD () Up to 8hrs, rough terrain, possibility no tracks; for fit & capable walkers.
- EXPLORATORY () Walks in terrain unfamiliar to leader, fit & capable walkers only.

NATURE OF TERRAIN:

- GOOD WALKING TRACK () G
- HILLY () H
- ROUGH TRACK () RT
- NO TRACK () NT
- CREEK CROSSING () CKX
- ROCK SCRAMBLING () RS

Degree of Difficulty 15.17

TIMES (WALKING) WT 3 1/2 hrs. (TOTAL) TT 7 hrs. Est. LENGTH 10 kms

ASSEMBLY POINT & DEPARTURE TIMES. BATEMANS BAY (CP) XX 0900 MOGO -

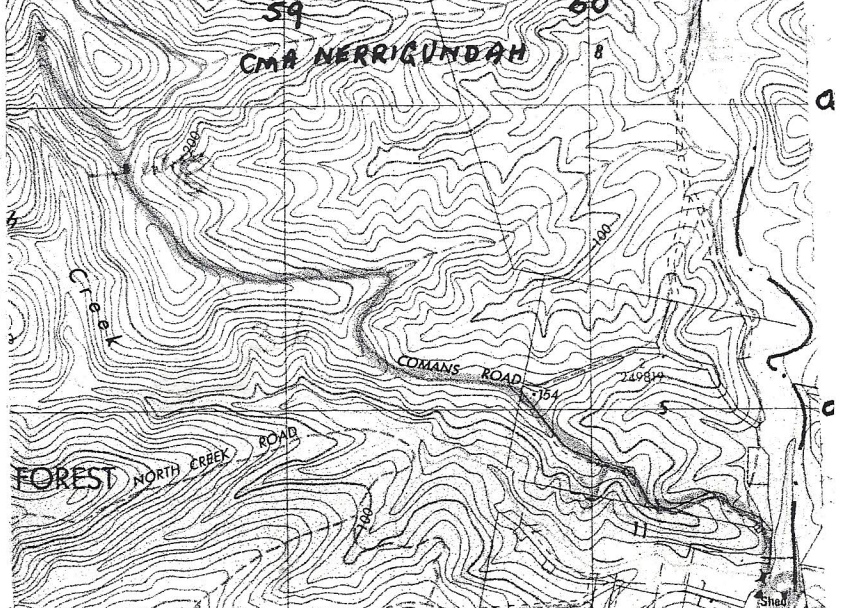
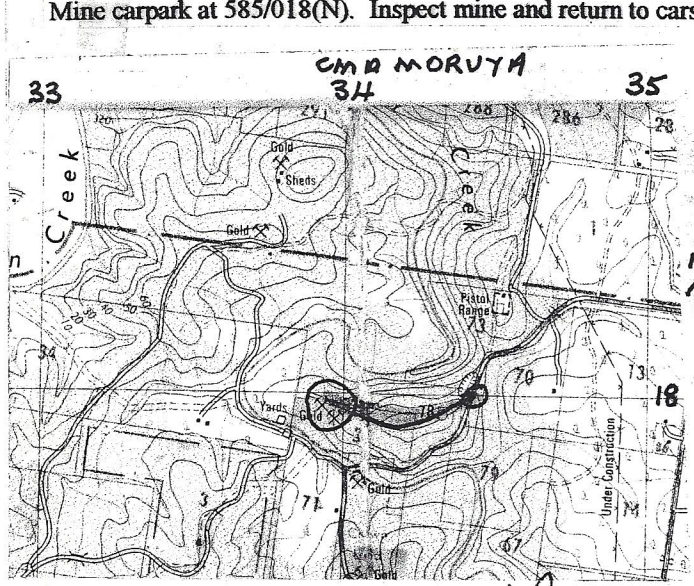
MORUYA (CPM) 0930 Other _____

ADDITIONAL (eg Barbecue Swimming etc) _____

BR&F

ROUGH MAP OF ROUTE; (or description of walk using grid references eg. (Kioloa map) START at 573674 (18 Mile Peg Rd.) Walk east to grid ref 582672 (road junction on right) turn south - follow road to grid reference 589663 take left fork to 586669 etc)

Park cars on Dwyers Creek Road at 344/180(M) and take unnamed road west to silver mine at 339/179(M). Inspect mine and return to cars. Drive through Bodalla and Nerrigundah to park cars on Comans Road at 606/004(N). Walk north-west up Comans Road to the Comans Mine carpark at 585/018(N). Inspect mine and return to cars.



WALK / CAMP APPROVED K. MacLatchy (Walks Organiser)

Passenger contribution \$ _____

Moruya \$ 6
BB \$ 9

The Walking Trail – Coman’s Mine

The walk begins with a relatively steep bush staircase, descending to a trail that was originally part of the horse tramway accessing Coman’s Mine. The tramway was used to transport equipment to the mine from Nerrigundah.

About 400 metres from the start of the tramway is a pile of quartz rocks that marks the entrance to the mine tunnel which was originally dug by Coman and Bloomfield.

The Stamper Battery

Walking a further 60 metres a staircase on the left leads to the stamper battery. The Radiant Mining Company installed the ten-head stamper battery when Coman’s Mine was reopened in 1938. It was used to crush the ore to a fine dust so the gold could be separated. Ore was brought to the crusher in small trucks, pushed along rails.

A truck engine drove the belt wheels, which raised and dropped the heads to crush the ore.

A roof covered the entire crusher, motor and screen system so the stamper could operate in all weather. For safety reasons the roof was dismantled in 1999 and State Forests installed a new roof.

The crushed ore was washed through screens and then splashed over a plate coated with quicksilver (mercury). The gold mixed with the mercury, sticking to the plates while the waste was washed away. The plates are gone now but the frames are still intact.

Water was sourced from the head of North creek, which had been dammed and directed through a series of pipes to the stamper.

The Rail Track

Back on the main trail are two ore trolleys on railway tracks leading to two shafts. The first shaft has been filled in but was 12 metres deep, while the fenced shaft which can still be seen, is 30 metres deep.

Past the deep shaft a small bush track can be carefully negotiated leading to the concrete dam. The dam was constructed across North Creek to direct water to the stamper battery. Water entered two pipes, one lead to the stamper and the other allowed the water to flow through the dam, presumably over a small wooden table to catch any alluvial gold

